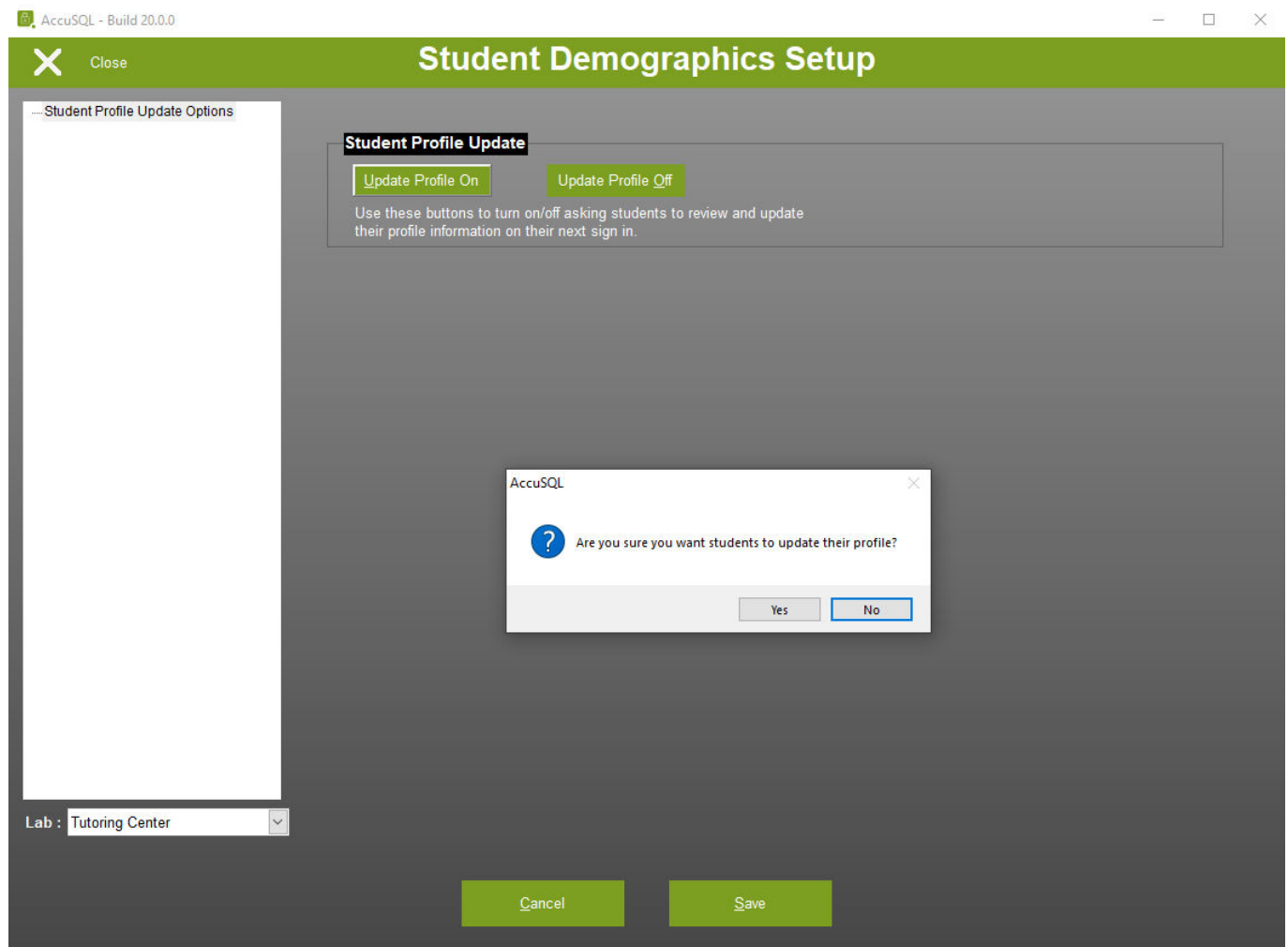


ACCUTRACK STUDENT DEMOGRAPHICS SETUP OPTIONS

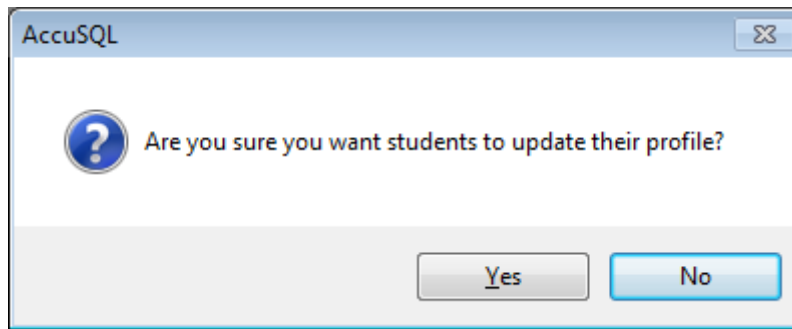
If you click Student Demographics from the main System Administration screen, then select Setup, you will be presented with a Control Panel Options view that shows context-specific options for your Student Demographics Setup screens. Here are the Control Panel options for Student Demographics Options in Setup:

- **Student Profile Update Options** – Used to display the Modify Students screen when students sign in.

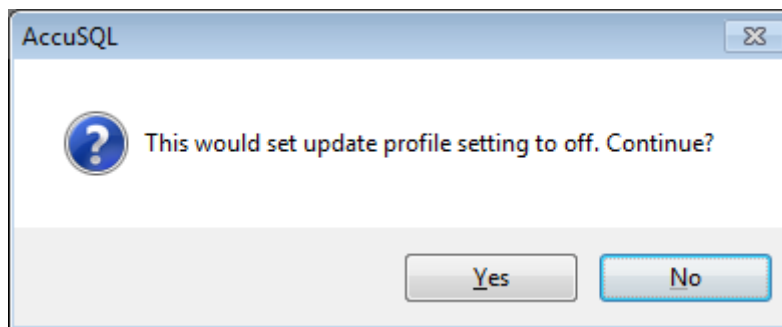


- **Update Profile On:** Click this button to activate the profile update mode. When this mode is activated, **AccuSQLAccuTrack will display the New Student screen pre-filled with the student's information and will ask students to review and update this information if needed. This will happen once per student.** * Update Profile Off:** This reverses the button above and cancels the profile update mode.

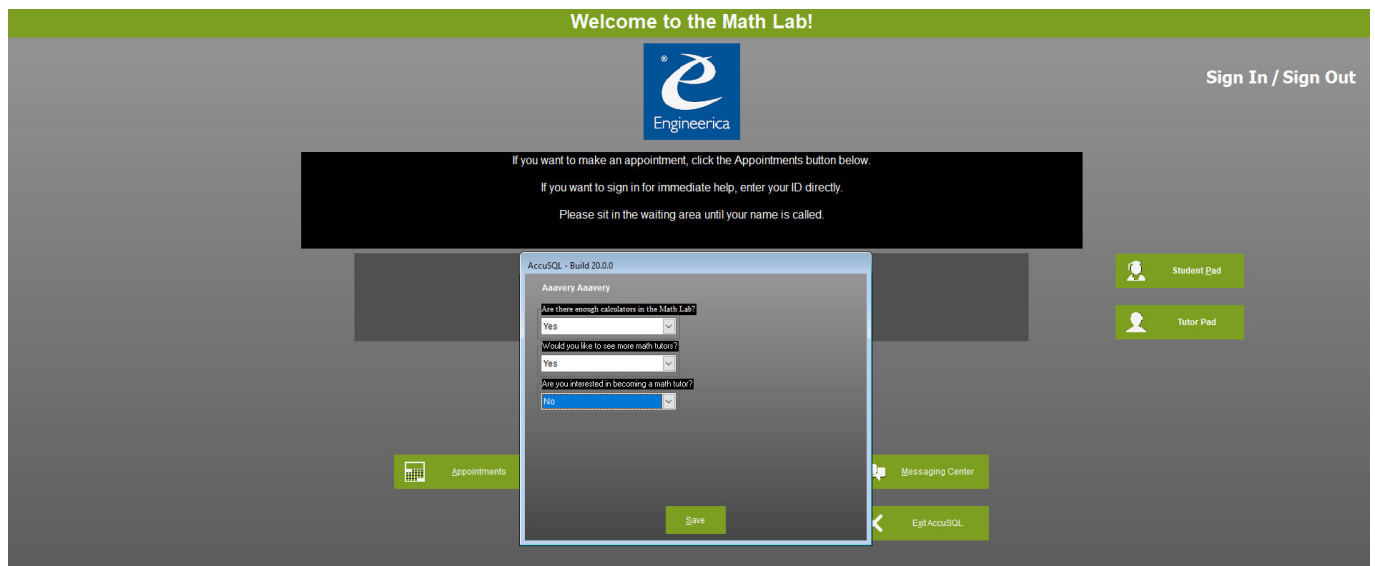
When you click the Update Profile On button, you will get a confirmation message. Click Yes to turn on profile updates.



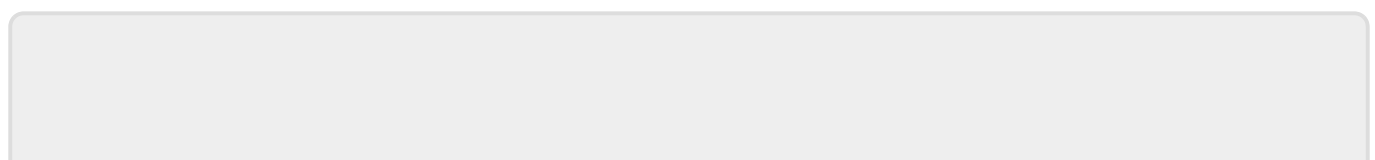
And if you turn it off, you will receive a different confirmation.



When the student signs in for the first time after the profile update has been turned on, they will see the Update Info screen with their student record displayed. They will be required to fill in any of the required fields and then click Next to continue with the normal sign-in process.



[Previous - STUDENT DEMOGRAPHICS](#) | [TOC](#) | [Next - SET APPOINTMENTS SCREEN](#)



From:

<https://www.attendance-tracking.com/docs/> - **Engineerica Documentation**

Permanent link:

<https://www.attendance-tracking.com/docs/doku.php/accutrack/fullmanual/student-demographics-options>

Last update: **2021/06/03 15:50**

