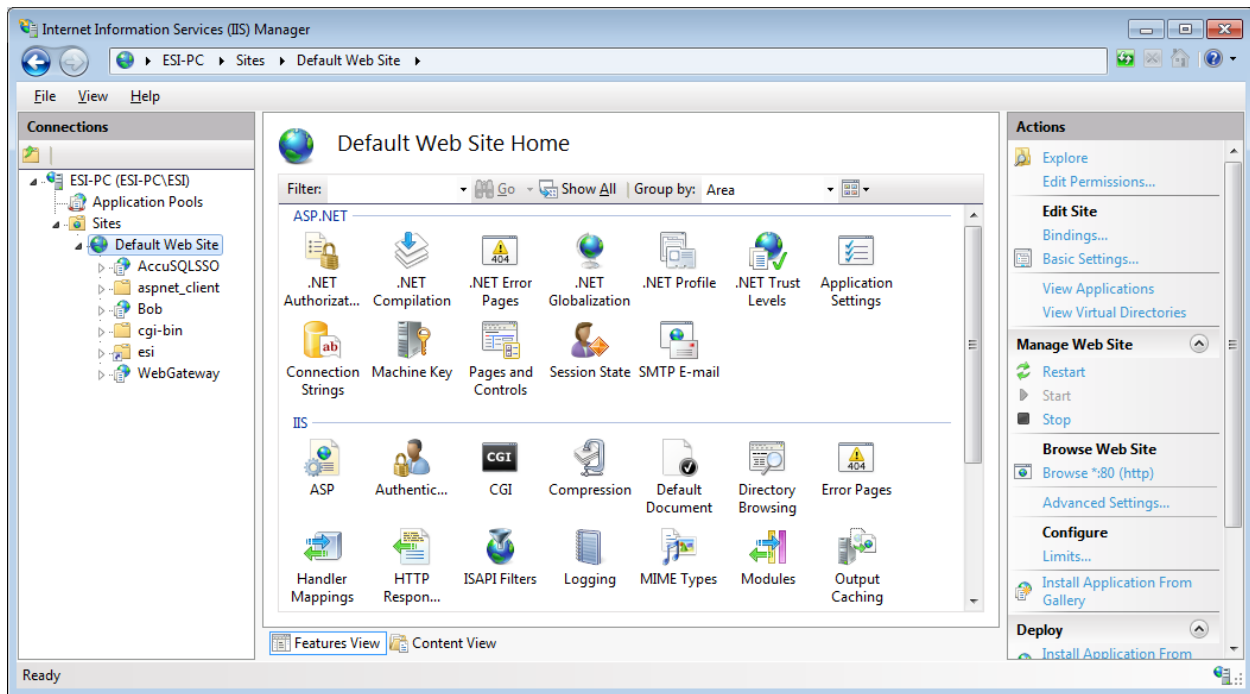


## Implementing Single Sign on from a Portal to Web Gateway

This document describes how to implement SSO from your college portal for use with Web Gateway. This example uses ASP.NET code, but you can accomplish the same thing using php.

For this example, I am running both the portal and Web Gateway on localhost with an IP address of 192.168.1.127. Of course, you would change your values accordingly.

I have an application in IIS called AccuSQLSSO. This emulates the college portal. I also have the Web Gateway application installed and running properly in IIS.



## Web Gateway settings

In C:\WebGateway\ClientBin\API.xml

I have my token

```
<apiInfo>  
<token>eb63fa38240847ea8ad0c632822a951b</token>  
</apiInfo>
```

You can make this value whatever you would like.

## Portal settings

In the AccuSQLSSO root folder, I have a **Default.aspx** page.

In that page, I have created some links to the RedirectWebGateway.aspx page, also located in my AccuSQLSSO root folder. These will be discussed in more detail later. You would modify these links to go to the RedirectWebGateway.aspx page on your portal site.

In the **RedirectWebGateway.aspx** page:

You would modify under //USER CONFIGURATIONS

```
const string domain = "192.168.1.127/WebGateway";  
const string token = "eb63fa38240847ea8ad0c632822a951b";
```

so that it points to your WebGateway URL and uses the same token ID as defined in the API.XML file located in the WebGateway\ClientBin folder.

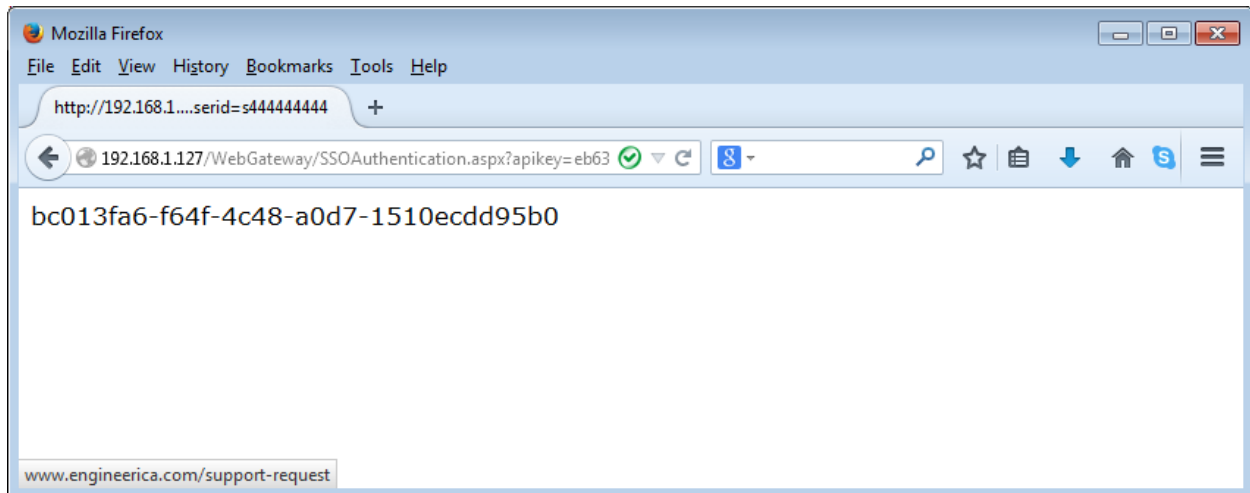
## Following the Process Manually

Let's examine the following link:

<http://192.168.1.127/WebGateway/SSOAuthentication.aspx?apikey=eb63fa38240847ea8ad0c632822a951b&userid=s444444444>

We are calling the SSOAuthentication.aspx file in Web Gateway, entering the apikey, then passing the userid to WebGateway from the portal login. The apikey is the token value in the RedirectWebGateway.aspx page that also matches the <token></token> value in the API.XML file in the <WebGateway root>\Client bin folder.

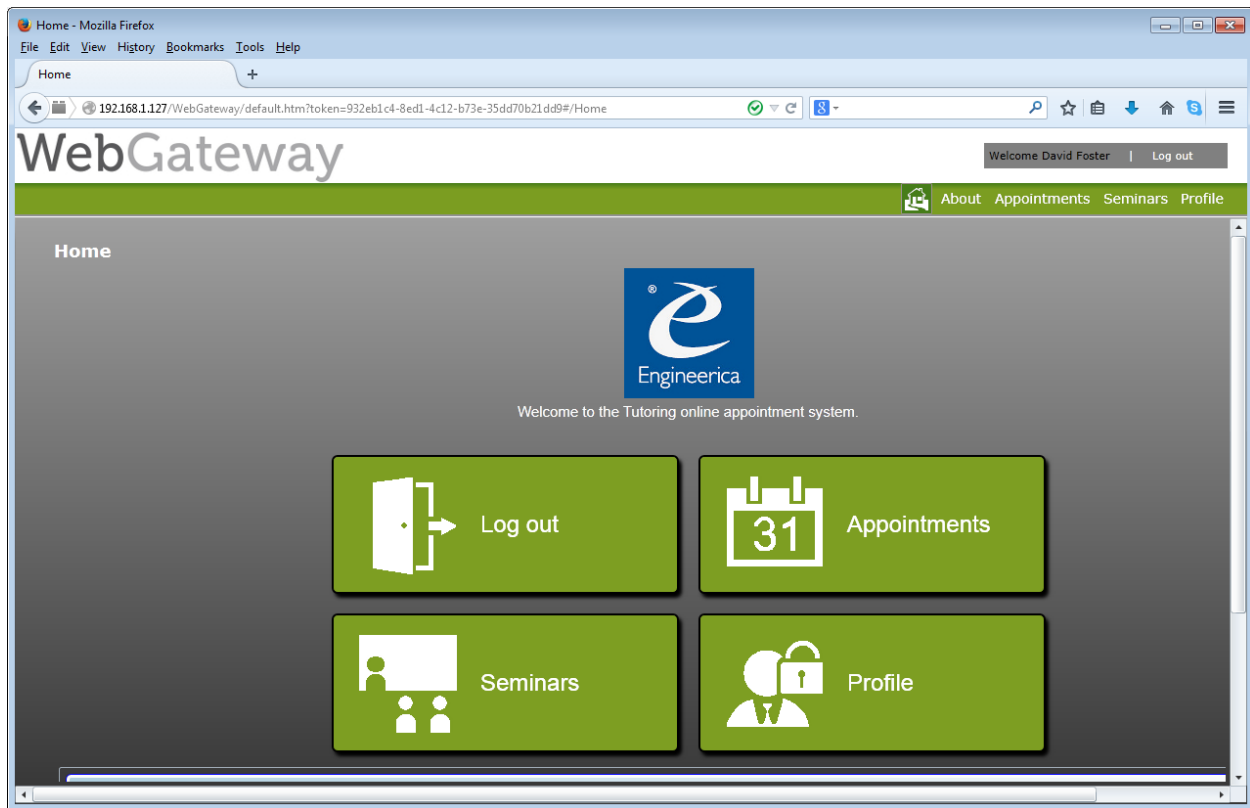
If that is pasted as a url, a unique value will be returned.



This value is uniquely generated each time it is accessed and is only used once.

Now if we pass:

<http://192.168.1.127/WebGateway/default.htm?token=bc013fa6-f64f-4c48-a0d7-1510ecdd95b0> to Web Gateway, we are signed in as the student with the 444444444 ID.



This is the id for the login (s = student and t=tutor), since students and tutors can both login to Web Gateway and are then presented with different options depending on the login type.

Also in the RedirectWebGateway.aspx file, notice the following code:

```
if (string.IsNullOrEmpty(type))  
{  
    type = "s";  
}
```

In this example, if no type is passed, then it will default to s (student). For a tutor login, we are creating a separate link where we pass the type as t, as follows:

```
<a href="http://192.168.1.127/AccuSQLSSO/RedirectWebGateway.aspx?type=t">Open Web  
Gateway</a>
```

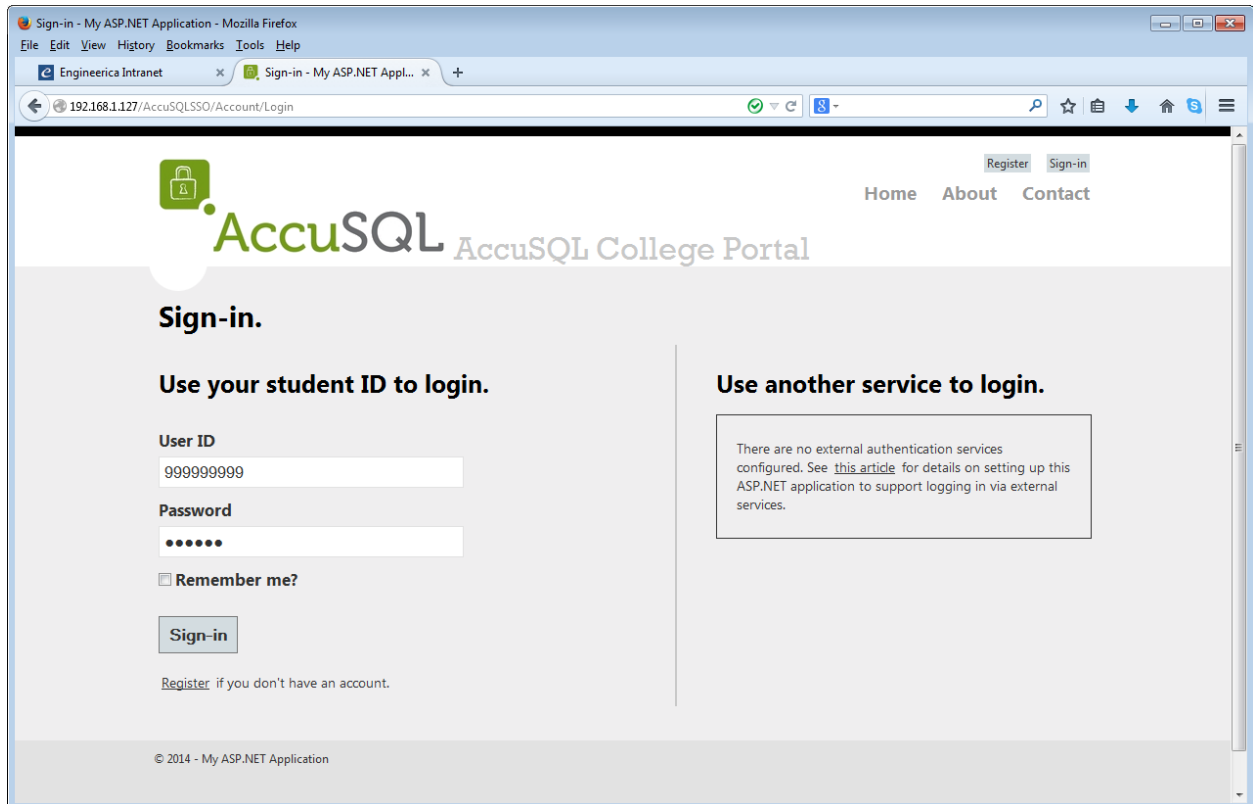
This works because Web Gateway will also validate against the ID stored in the tutor table in the AccuSQL database. If that ID does not exist, then it will redirect to the main Web Gateway page with no login credentials passed.

You may be able to find a more elegant solution if your tutors have a specific prefix for their IDs that is unique from student IDs, or if you can validate against another system to determine the login type.

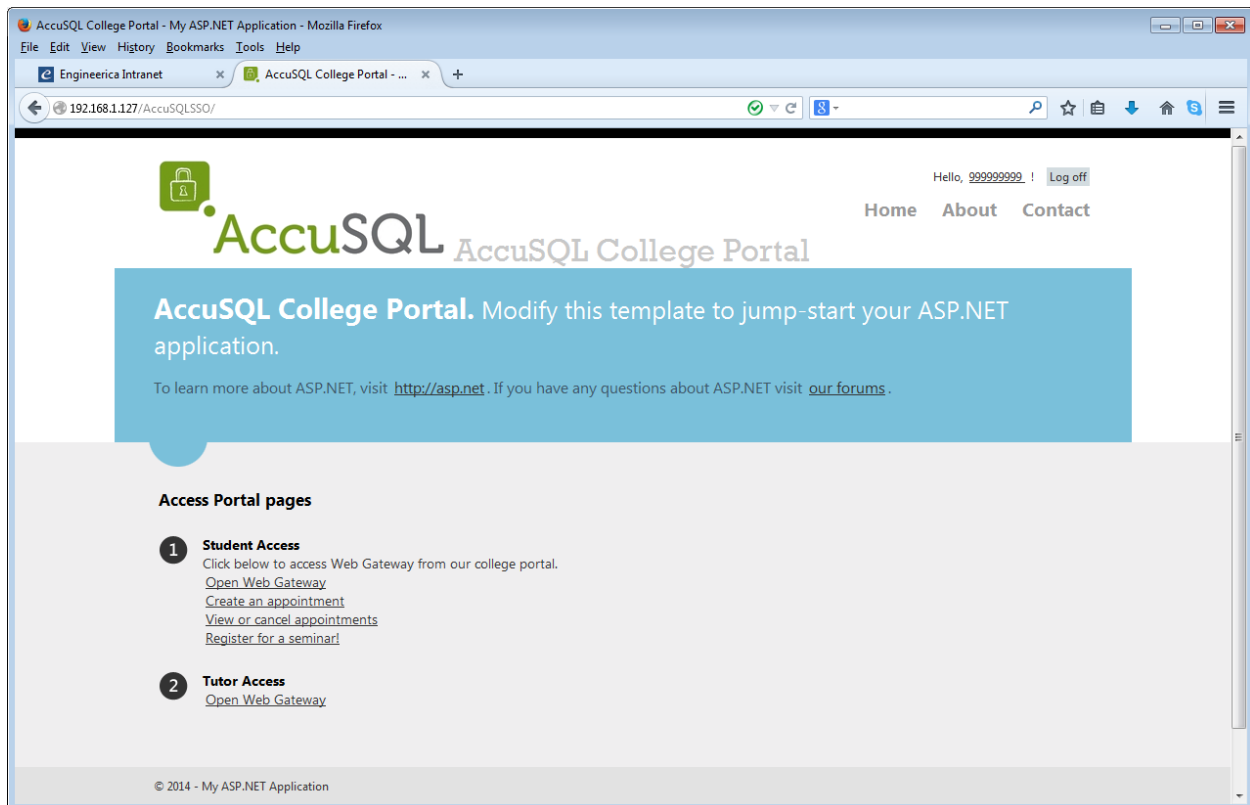
## Following the Process via Links

Here is the process again, doing it through the web pages themselves:

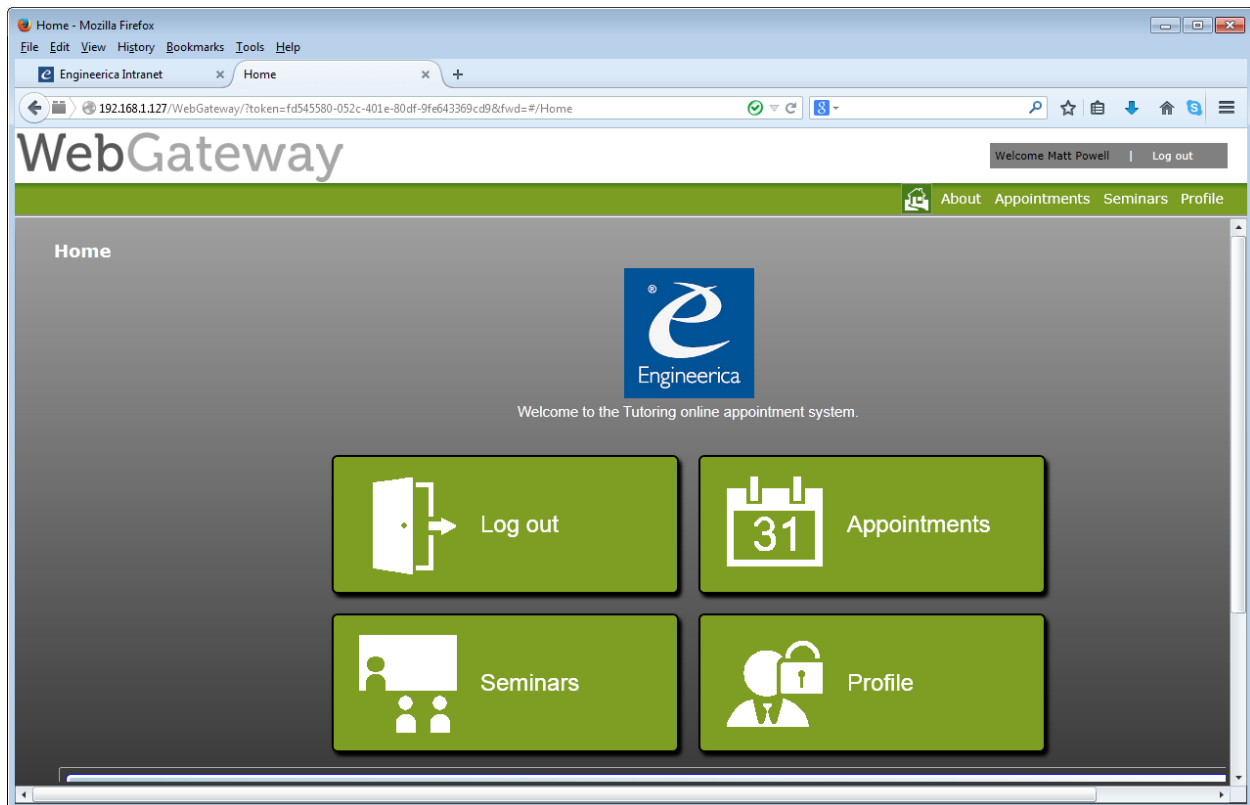
Sign into the portal. In this case, I have logged in as a student.



The screenshot shows a web browser window with the title "Sign-in - My ASP.NET Application - Mozilla Firefox". The address bar displays "192.168.1.127/AccuSQLSSO/Account/Login". The page features the AccuSQL logo and the text "AccuSQL College Portal". Navigation links for "Home", "About", and "Contact" are visible, along with "Register" and "Sign-in" buttons. The main content area is titled "Sign-in." and is divided into two sections: "Use your student ID to login." and "Use another service to login." The "Use your student ID to login." section contains a "User ID" field with the value "999999999", a "Password" field with masked characters, a "Remember me?" checkbox, and a "Sign-in" button. Below the "Sign-in" button is a link to "Register if you don't have an account." The "Use another service to login." section contains a message box stating: "There are no external authentication services configured. See [this article](#) for details on setting up this ASP.NET application to support logging in via external services." The footer of the page reads "© 2014 - My ASP.NET Application".



Now I will click the Open Web Gateway link under item 1. Web Gateway is then opened and the student with an ID of 999999999 (Matt Powell) in the AccuSQL database is logged into Web Gateway.



We also have the capacity to go directly to the various screens in Web Gateway using a forward like so:

<http://192.168.1.127/AccuSQLSSO/RedirectWebGateway.aspx?fwd=#/SetupAppointment>

Here are the screens you can go to directly using a forward:

Create an appointment page: `fwd=#/SetupAppointment`

View or cancel appointments page: `fwd=#/ViewAppointments`

Register for a seminar page: `fwd=#/Seminars`

And to create a tutor sign-in link, you would pass the `type=t` with the link, as follows:

<http://192.168.1.127/AccuSQLSSO/RedirectWebGateway.aspx?type=t>

Remember, if the link is a type `t` and the tutor does not exist in the AccuSQL tutors table, then Web Gateway will open the main screen without logging in.

## Source Code Links

You can download the Default.aspx and RedirectWebGateway.aspx pages here:

[http://www.accusql.com/support/sso\\_files.zip](http://www.accusql.com/support/sso_files.zip)