

AccuSQL 2015 / AccuTrack 2015 Tech Tips:

Creating a Silent install for AccuSQL or AccuTrack

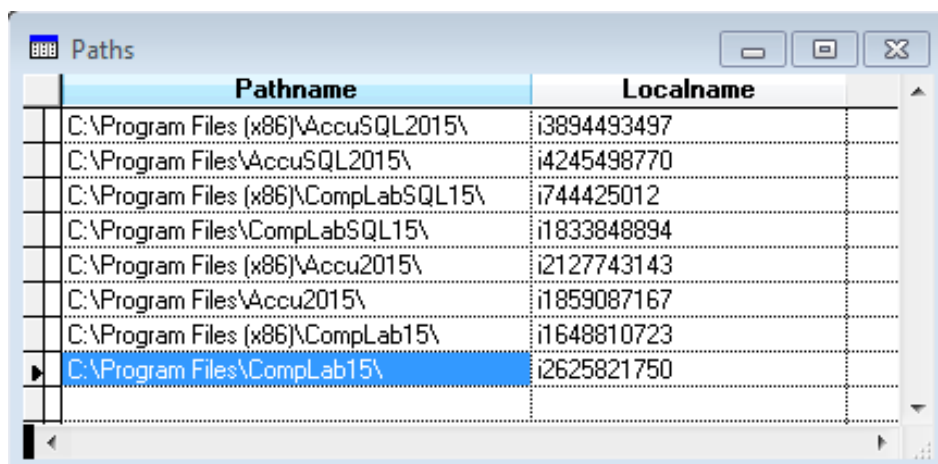
In this tech tip, I will show you how you can create a completely silent installer for AccuSQL or AccuTrack. This can also be used for the Computer Lab Plugin. This topic will include:

- Silently install the Accu software
- Installing the SQL Server Native Connectivity Client (required by AccuSQL and Computer Lab SQL)
- Pushing the folder that contains the database connection parameters

This example will be using a bat file and a vbs file to accomplish the above. If you are using PDQ Deploy, Silent Install Builder, or the like, you can accomplish the same goals, probably easier. I find it satisfying to accomplish this task using only files created in NotePad, but maybe that's just me ☺

Creating the Initial ACCUTRACK folder

Before you can push out the installer, you will need a host PC that you use to connect either AccuSQL, AccuTrack, or the Computer Lab Plugin to the database you want to use. When you first open AccuSQL, AccuTrack, or the Computer Lab Plugin (just open it once and then press cancel if Computer Lab), you may notice that the software will copy some files the first time before it opens. That process creates a unique "I" folder in the C:\Users\Public\Documents\ACCUTRACK folder on the client. Why? There are a several reasons, but primarily we are generating a dbparam file set that stores the database connection parameters in an encrypted format. The "I" folder number that is generated in C:\Users\Public\Documents\ACCUTRACK is based on the location where the Accu product itself was installed, as follows:



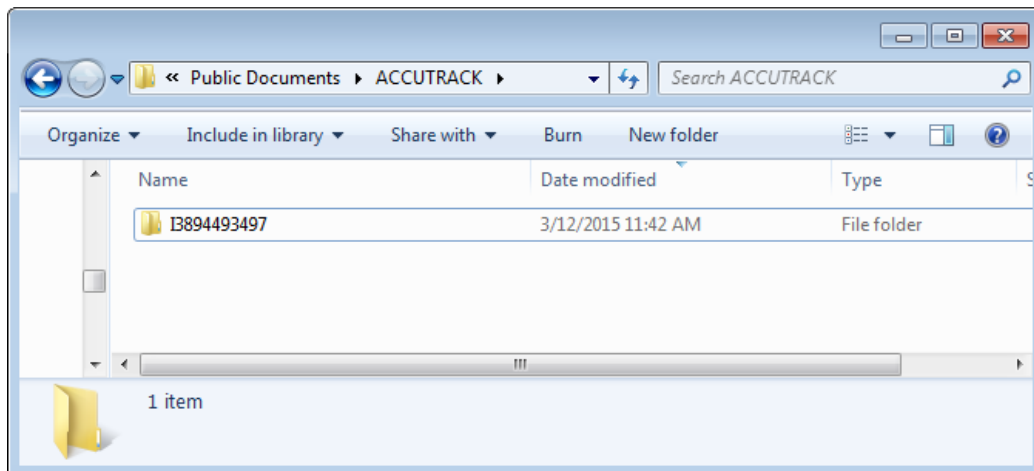
Pathname	Localname
C:\Program Files (x86)\AccuSQL2015\	i3894493497
C:\Program Files\AccuSQL2015\	i4245498770
C:\Program Files (x86)\CompLabSQL15\	i744425012
C:\Program Files\CompLabSQL15\	i1833848894
C:\Program Files (x86)\Accu2015\	i2127743143
C:\Program Files\Accu2015\	i1859087167
C:\Program Files (x86)\CompLab15\	i1648810723
C:\Program Files\CompLab15\	i2625821750

So for example, if you install AccuSQL 2015 on a 64-bit PC, the "I" number will always be I3894493497. With that knowledge, we can use a PC that already has the Accu product installed and then copy the ACCUTRACK folder set to push to other clients that will be installing the software in the same installation path.

Note: C:\Program Files (x86)\ denotes a 64-bit PC and C:\Program Files\ denotes a 32-bit PC.

Setting the Database Connection Parameters

On a host PC (not one you will ultimately be pushing the installer to), install either AccuSQL, AccuTrack, or the Computer Lab Plugin. After the installation completes, run the program from the Desktop shortcut and after it opens, you can immediately exit AccuSQL, or AccuTrack, or in the case of the Computer Lab Plugin, just press Cancel when it pops open a screen asking for its database location. This step will create the ACCUTRACK folder and files and folders under it in C:\Users\Public\Documents.



Now that the ACCUTRACK folder is created in Public, go to the folder where AccuSQL, AccuTrack, or the Computer Lab Plugin is installed and look for a program called setdatapath.exe. Run that program to set the database connection parameters.

Using AccuSQL or the Computer Lab Plugin for AccuSQL, it would be something like this (your parameters would be different of course)

Database Location

Application Shared path:
Z:\ACCFILES\

Select Path Show Path in Explorer

SQL server connection info

Server engserver,60558\sql express

Authentication mode SQL server authentication

UserName AccuTrack

Password *****

Database AccuSQL13TESTING

Owner

SQL Server Client Driver SQL Server Native Client 10.0

Test Connection

Back Save

Use this form to set up the connection to the SQL Server database. Here is how:

- 1) Enter the Application Shared path. This is a path to a shared folder used by all AccuSQL installations sharing the database. Shared files, like customized reports, are saved in this folder. In a native database installation, this is the parent folder of AccuData folder.
- 2) Enter the SQL Server. A typical setting for SQLExpress installed on this machine is: [Server:]\SQLEXPRESS
- 3) Select the Authentication mode. If you are using a trusted instance along with Windows authentication, select "Windows". Otherwise, select "SQL Server".

Set your parameters, test your connection to make sure all is happy and then Save and X out of setdatapath.exe

Using AccuTrack, or the Computer Lab Plugin for AccuTrack, it would be something like this (your parameters would be different of course)

Database Location

Data Path:

If you want to secure data from regular logins into AccuSQL stations then supply the information below and save.

Authentication Information

UserName
 Domain (or server) Leave domain empty if username is a UPN value, ie: user@myDomain
 Password
 Confirm Password

Usage:

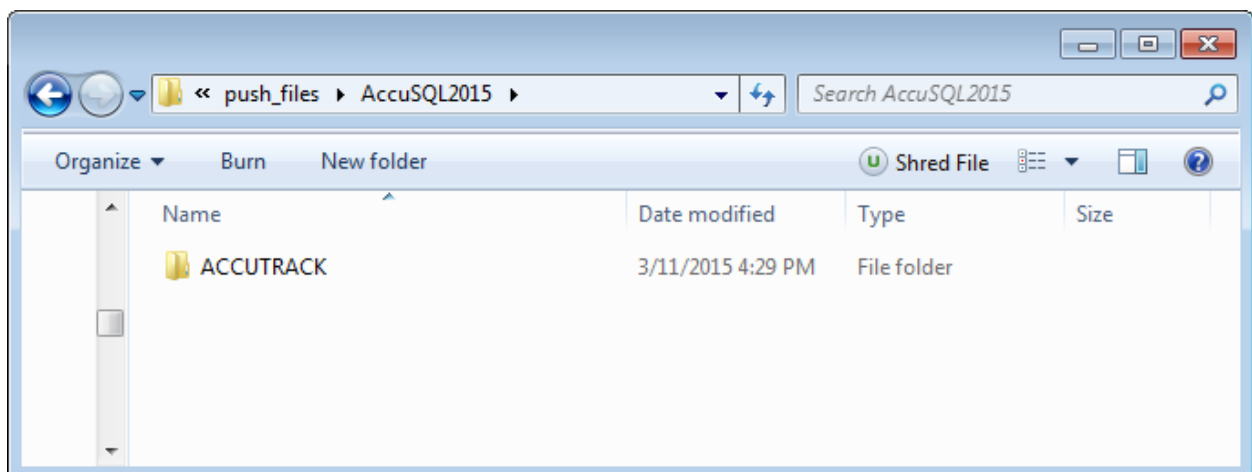
- 1) Set the data path and save.
- 2) Create a user account that has "full access" rights to AccuSQL shared folder and subfolders (say AccuAdmin).
- 3) Create a user account that has "read access" right to AccuSQL shared folder's root (say AccuUser).
- 4) On sign in stations setup local windows accounts as restricted accounts who connect to shared folder as "AccuUser" (read only access to share's root).

Assuming domain name is myDomain and password for AccuAdmin is myPassword:
 UserName:AccuAdmin

Set your Data Path and Save. Now X out of setdatapath.exe.

Copying the ACCUTRACK Folder to your Push Server

Now that the database location is set, go out to your C:\Users\Public\Documents folder and then copy the ACCUTRACK folder. You will want to copy it on a server where you can then send it out to your clients. In the following example, the database location was set using AccuSQL 2015 and AccuSQL 2015 was installed in the C:\Program Files (x86)\AccuSQL2015 folder. The ACCUTRACK folder was then copied to a server in a folder called \\engserver\4All\\push_files\AccuSQL2015:



Also in the push_files folder I have copied the SQL Native Connectivity Client msi for both 32-bit and 64-bit PCs. We will get to that in a moment.

Creating a Silent.bat File

In the same folder where the setup.exe resides for the software installer (in this example, AccuSQL 2015), I have created a bat file called silent.bat that will do the work for me, as follows:

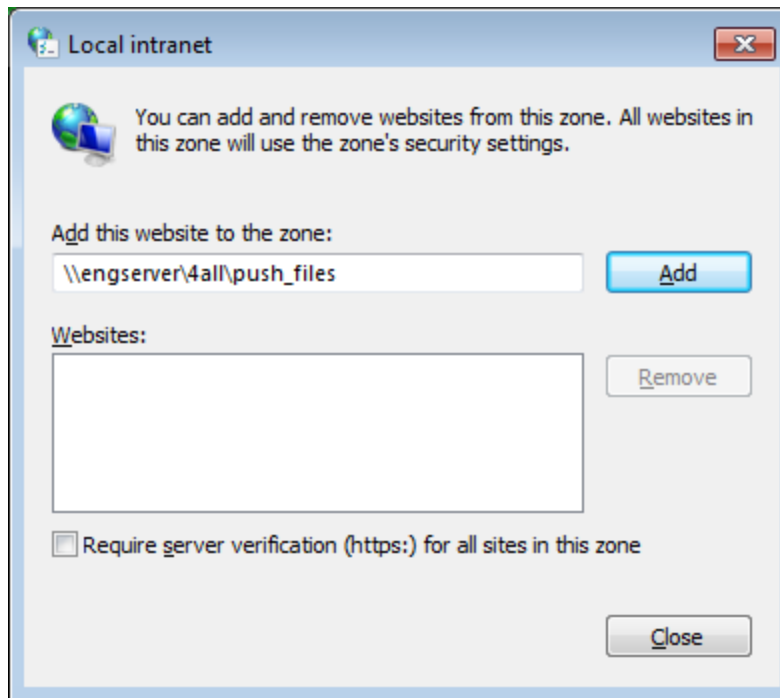
```
@echo off
:: check for sql native driver
Set RegQry=HKLM\Hardware\Description\System\CentralProcessor\0
REG.exe Query %RegQry% > checkOS.txt
Find /i "x86" < CheckOS.txt > StringCheck.txt
If %ERRORLEVEL% == 0 (
    :: 32-bit
    del checkOS.txt
    del StringCheck.txt
    :: could add a call from a text file or use an array for multi pc installs here.
    \\engserver\4all\push_files\sqlncli.msi /qn
) ELSE (
    :: 64-bit
    del checkOS.txt
    del StringCheck.txt
    :: could add a call from a text file or array for multi pc installs here.
    \\engserver\4all\push_files\sqlncli_x64.msi /qn
)

:: install AccuSQL 2015
setup.exe /s /d /v/qn

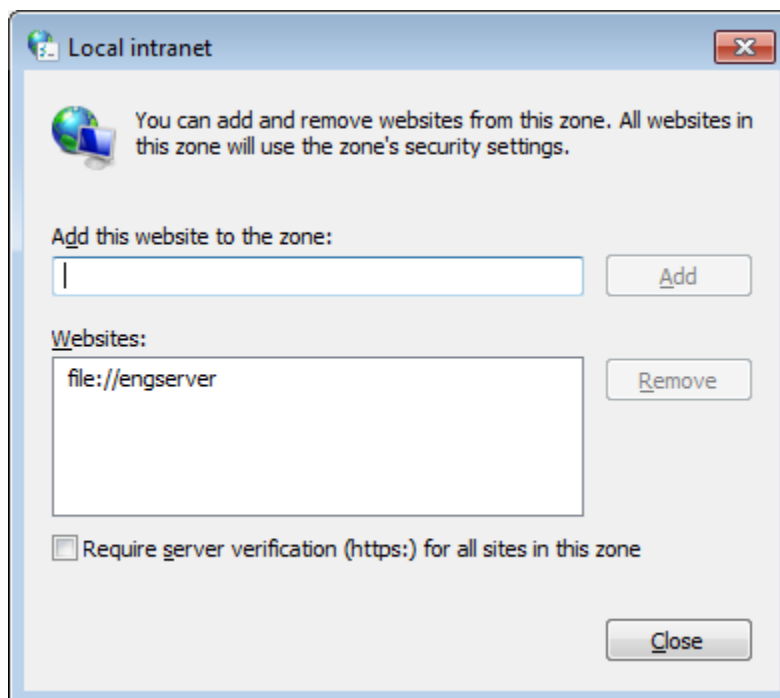
:: copy push files to public
:: could add a call from a text file or use an array for multi pc installs here.
xcopy /s /e \\engserver\4All\push_files\AccuSQL2015\ACCUTRACK
C:\Users\Public\Documents\ACCUTRACK\
exit
```

The :: check for sql native driver section is checking to see if the target PC is either 32-bit or 64-bit and based on that it will determine which msi to install for the SQL Native Connectivity Client from the \\engserver\4all\push_files\ folder in this case. You can copy those msi files from the folder where the Accu software is installed (only applies to SQL versions) under the sql_drivers folder. If you are using this script for AccuTrack, you can comment out this part of the code completely.

Note: If you get a message that the msi install is not verified when the bat script runs, you will need to add the server to the Local intranet zone:



When you add it, it will change the look of the link, which is fine:



The :: install AccuSQL 2015 section is installing the Accu software itself (AccuSQL 2015 in this case). The switches are as follows:

```
/s silent install  
/d administrative install  
/v pass variable for /qn no UI
```

The :: copy push files to public section is using xcopy to copy the ACCUTRACK folder and sub folder and files to the target PCs C:\Users\Public\Documents folder. The switches are as follows:

/a copies file with the archive attribute set
/e copies any subfolder, even if it is empty

Making the Install Even More Silent

While the above bat file has no prompts when it runs, it is fairly unobtrusive however it will still show a command prompt window when it is running. If you want to make the whole process completely invisible, you can create a vbs file that will call the bat file in a hidden shell. Here is sample code for how that is accomplished:

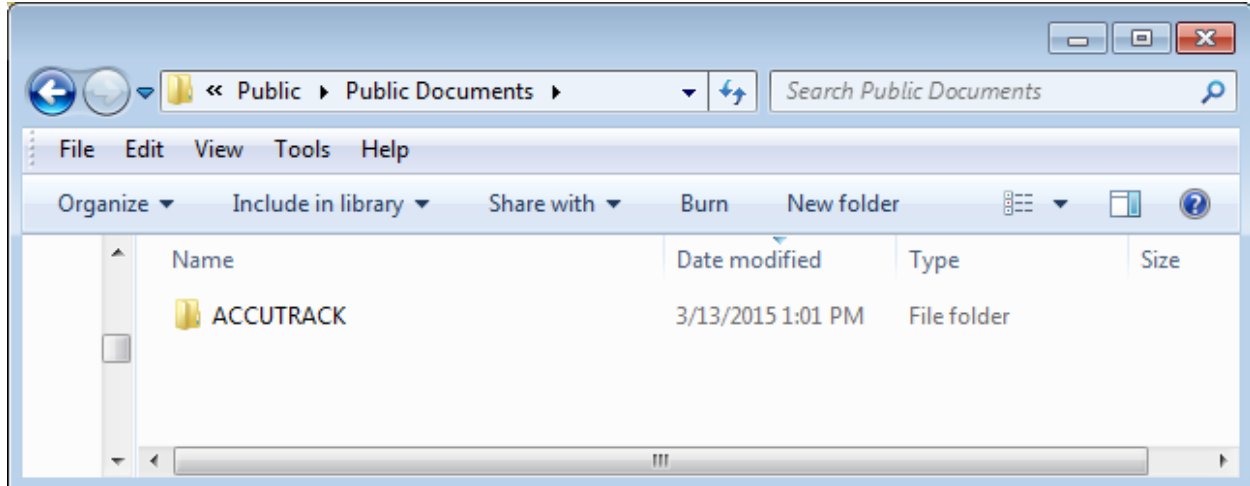
```
Set WshShell = CreateObject("WScript.Shell")  
WshShell.Run chr(34) & "silent.bat" & Chr(34), 0  
Set WshShell = Nothing
```

You can just paste this notepad and name it silent.vbs

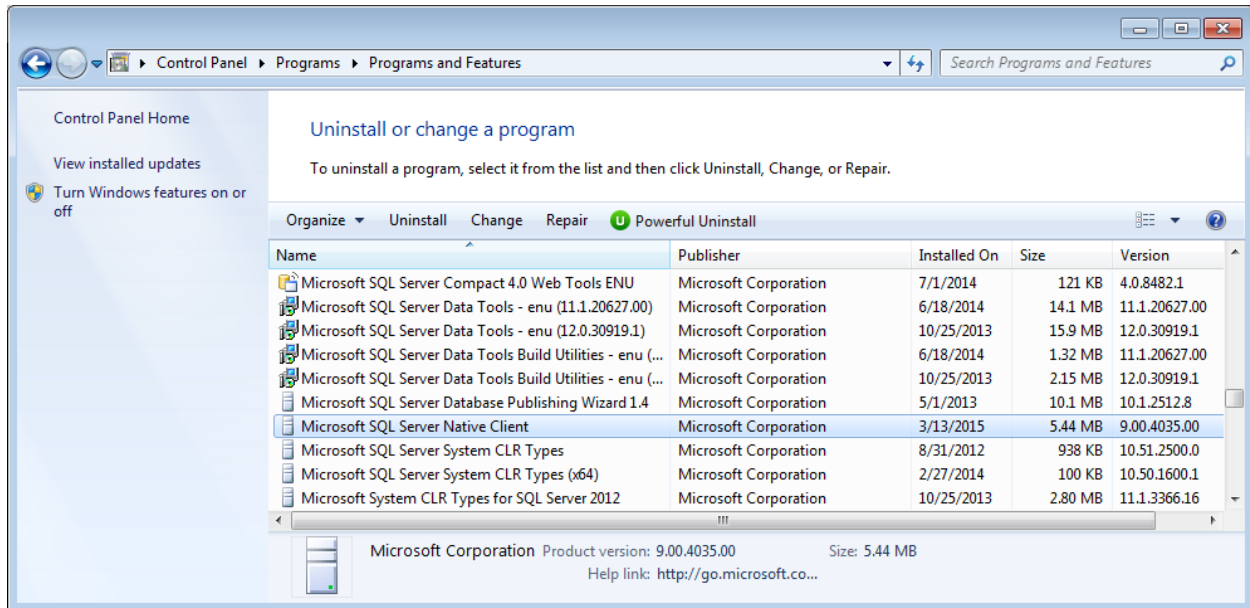
Putting it All Together

Now on a PC with neither the SQL Server native client driver installed nor AccuSQL installed, I will run silent.vbs. Since the process is completely invisible, I can watch the C:\Users\Public\Documents folder on the client to monitor progress.

Folder created:



SQL Native driver installed:



Now I will click the shortcut to AccuSQL 2015 from the Desktop and it opens to the SQL server database I want automatically:

The screenshot shows the 'Database Location - AccuSQL 2015 Build 14.0.1' dialog box. It has a 'Close' button at the top left. The 'Local folder:' field contains 'C:\Users\Public\Documents\AccuTrack\3894493497\'. The 'Shared folder:' field contains 'C:\Users\Public\Documents\AccuTrack\3894493497\SampleDatabases\'. Below these fields are 'Select Path' and 'Show Path in Explorer' buttons. The 'SQL server connection info' section contains fields for Server (engserver,60558\sql express), Authentication mode (SQL server authentication), UserName (sa), Password (masked with asterisks), Database (AccuSQL13TESTING), Owner (dbo), and SQL Server Client Driver (SQL Native Client). There is a 'Test Connection' button to the right of the Database field. At the bottom are 'Back' and 'Save' buttons. A scrollable text area at the bottom provides instructions on how to use the form.

Use this form to set up the connection to the SQL Server database. Here is how:

- 1) Enter the Shared folder. This is a path to a shared folder used by all AccuSQL installations sharing the database. All users who will be accessing AccuSQL need to have read/write/modify access to this folder. Shared files, like customized reports and photos, are saved in this folder, or associated sub-folders.
- 2) Enter the SQL Server. A typical setting for SQLEXPRESS installed on this machine is: [Server]SQLEXPRESS. Specify the port if you are not using the default 1433 port like this: [Server],portnumber\SQLEXPRESS