

Table of Contents

Web Gateway MVC.....	2
System Requirements	2
Installing Web Gateway MVC	2
Setting the Database Locations	6
AccuSQL Connection Information.....	7
AccuTrack (Native) Connection.....	9
Setting the Email Server Connection	10
Adding the Application to IIS	10

Web Gateway MVC

Web Gateway MVC (model, view controller architecture – MVC5) is the plugin for AccuSQL and AccuTrack that enables students to make appointments, register for seminars, take online surveys, and more via a Web page. The new architecture moves away from Microsoft Silverlight to an HTML 5/bootstrap.css architecture. This change widens the application's use to be available on practically any browser and mobile device with Web access, thus greatly increasing the usability of the product.

System Requirements

You must be running AccuSQL 2017 or later or AccuTrack 2017 or later for use with Web Gateway MVC.

There are no specific requirements on MVC 5 except for .NET 4.5 and IIS 7 or later to be installed on the machine. MVC libraries do not even need to be installed on the server considering that MVC 5 apps can provide the relevant MVC 5 libraries during deployment.

Windows Server 2008 SP2 is the oldest supported version, and it's recommended to use 2012 or 2012 R2 as those versions natively support the 4.5 (or greater) version of .NET.

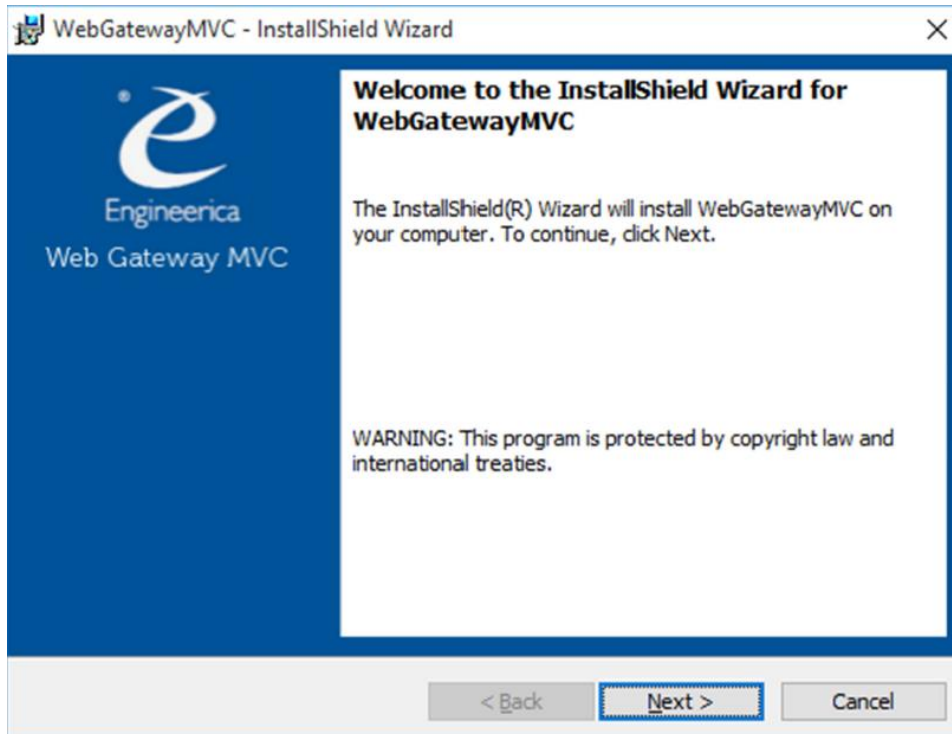
There are no specific hardware requirements, but we recommend a minimum 3 GHz processor and 4 GB of RAM (Recommended 8 GB RAM).

Important: For AccuTrack installations only, the AccuTrack database must be located on the same server that will be hosting Web Gateway MVC.

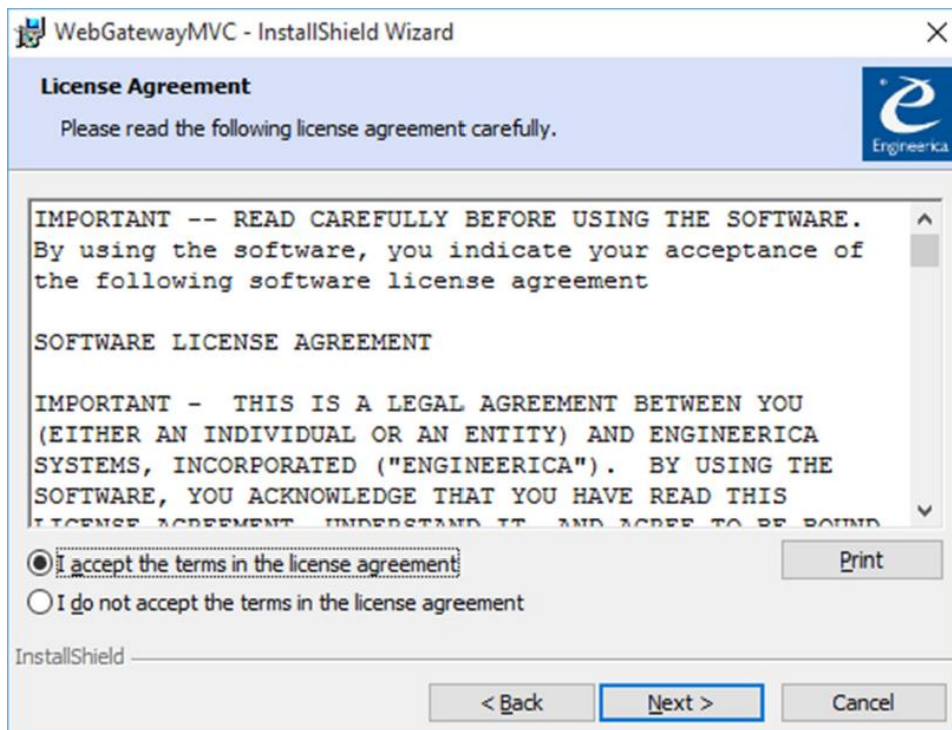
Installing Web Gateway MVC

Read the following for the Web Gateway MVC install Instructions. If you prefer a video, you can view that here: <https://www.youtube.com/watch?v=1h6DW0EnIbE>

In the WebGatewayMVC_DIST folder, run setup.exe to install Web Gateway MVC. After the splash screen finishes loading, click **Next**:

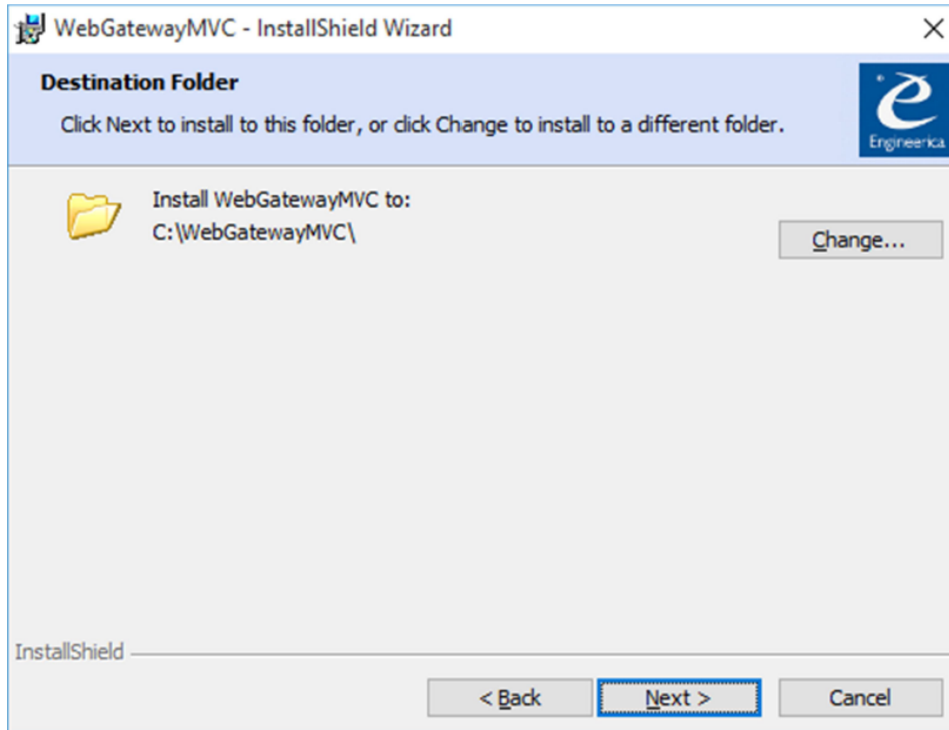


After reading the license agreement and accepting it, click **Next**:

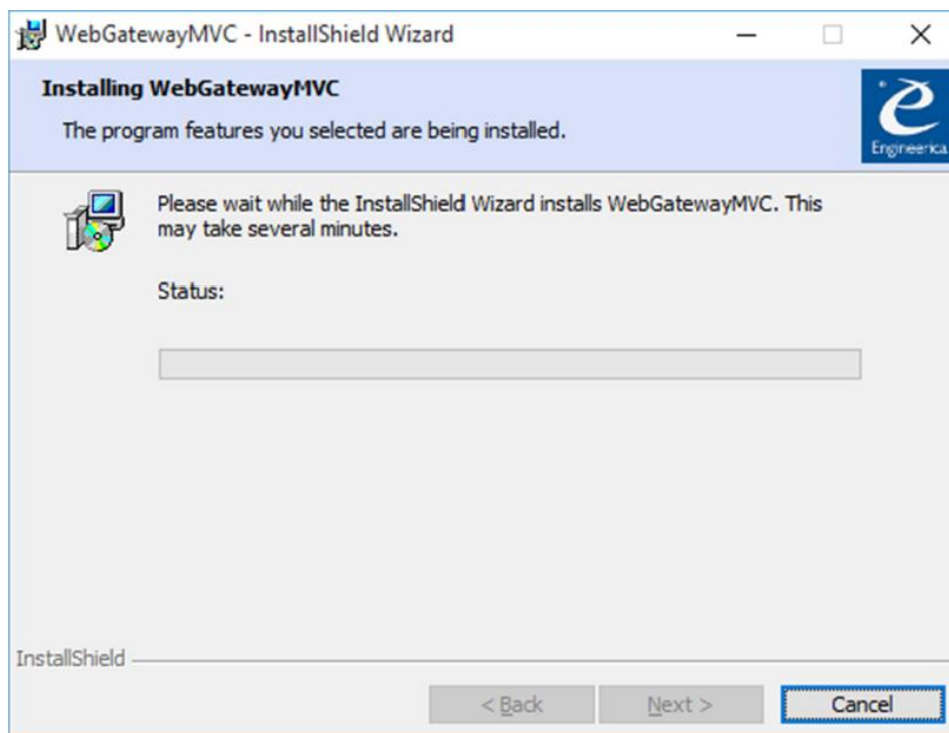


The default installation path is **C:\WebGatewayMVC**. Click **Next** to accept the default path or click **Change** if you would like to install to a different path.

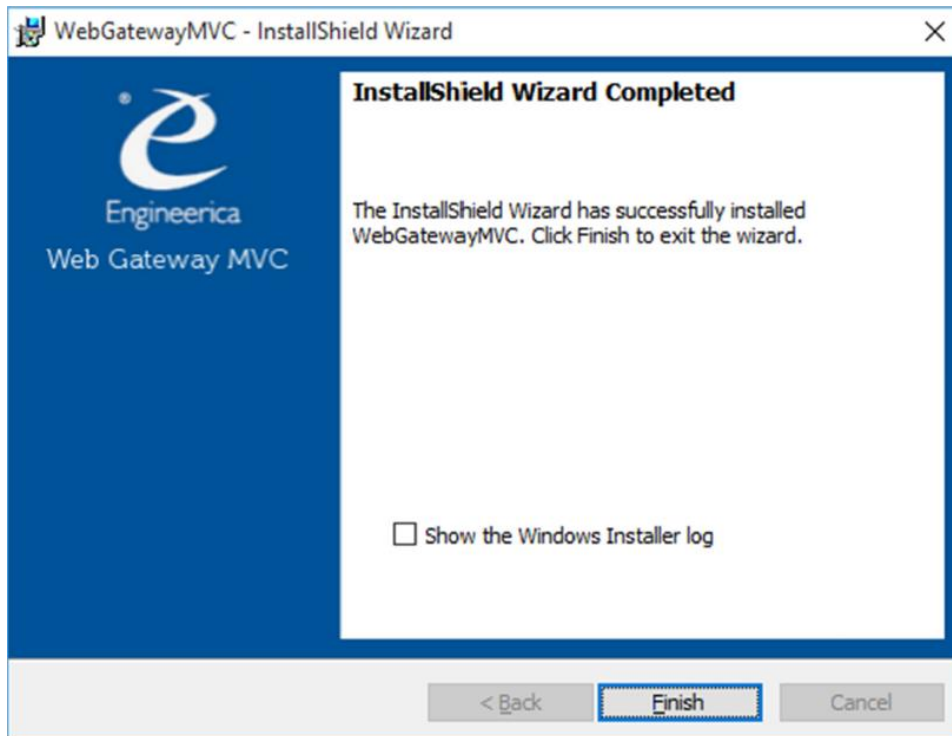
Note: For AccuTrack, the database must be located on the same server that is hosting Web Gateway MVC. AccuSQL does not have this requirement.



Review your installation selections and then click Install to install Web Gateway MVC.

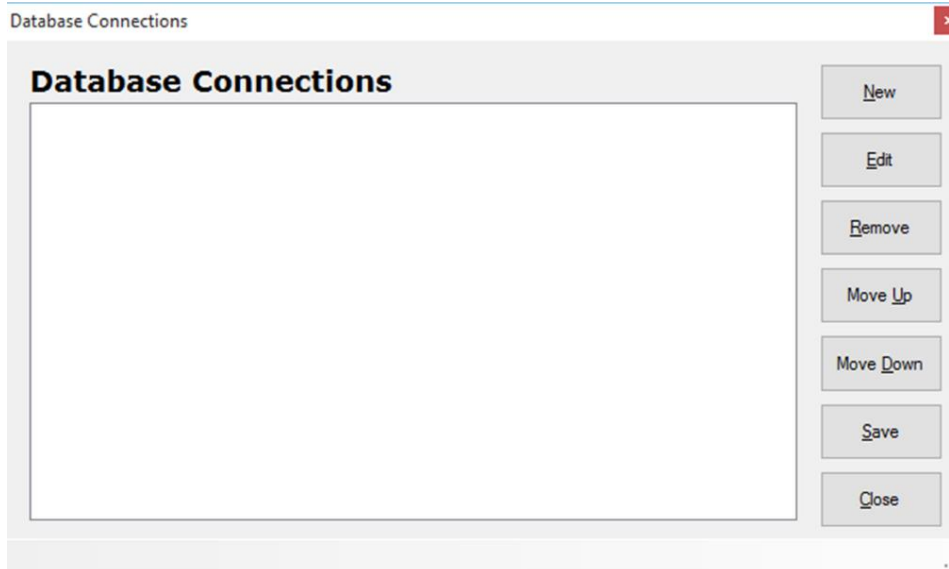


After the installation completes, click Finish.

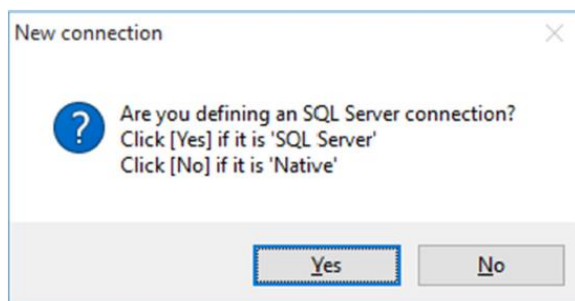


Setting the Database Locations

In the folder where Web Gateway MVC is installed (the default is C:\WebGatewayMVC) open the ClientBin folder and then run SetDataLocation.exe to setup the database connection information that will be used to connect the application to the database or databases you will be using with it.

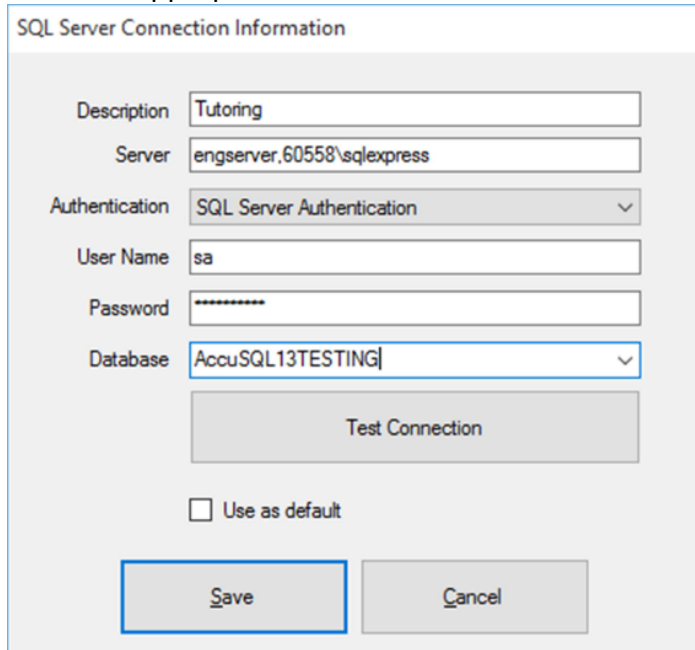


Click New to add a new database connection. You will be asked if you are defining an SQL Server connection (for AccuSQL) or a Native connection (for AccuTrack). Click Yes to define a SQL Server connection or No to define a Native connection.



AccuSQL Connection Information

Enter the appropriate information for the connection as follows:



- **Description:** Used to define the “Choose Lab” drop-down box presented in Web Gateway at login.
- **Server:** Enter the connection information to the MS SQL Server instance that is hosting your AccuSQL database. If you are unsure of the server connection parameters, you can typically get that information from an AccuSQL computer that is pointing to the database you want to use for your Web Gateway implementation.
- **Authentication:** If you are using SQL Server authentication to connect to the database, select that option from the drop-down, else you can select Windows Authentication.
- **User Name:** if using SQL Server authentication, enter the user name for the account you will be using to connect to the database. If Windows Authentication, this field will be grayed out.
- **Password:** if using SQL Server authentication, enter the password for the account you will be using to connect to the database. If Windows Authentication, this field will be grayed out.
- **Database:** Select the drop down to see a list of databases available (it may take a few seconds to populate). Select the AccuSQL database you will be using for this connection.
- **Test Connection:** Click this button to test your database connection. If it returns with anything other than Test Connection Succeeded, check your connection information again and retest.
- **Use as Default:** N/A.

Once you have successfully connected to the database, click **Save** button to save your changes.

You will then be presented with a Lab ID selection drop-down. Select the Local Lab you will be using for this connection. If you are not using Local labs, select DEFAULT [All] and click OK.

Lab Id

Lab Id

OK

Back on the main Database Connection screen, click Save to save your changes.

Database Connections

Database Connections

Lab Id	Database
Tutoring - (Lab: DEFAULT)	[SQL]

New Edit Remove Move Up Move Down Save Close

You can continue to define new connections for each database and each local lab you want to define. These options will be available in a drop-down box at sign in. In following example, a second connection has been defined that is pointing to a MATH lab located in the same database as the Default [All] lab.

Database Connections

Database Connections

Lab Id	Database
Tutoring - (Lab: DEFAULT)	[SQL]
Math - (Lab: MATH)	[SQL]

New Edit Remove Move Up Move Down Save Close

SQL Server Connection Information

Description

Server

Authentication

User Name

Password

Database

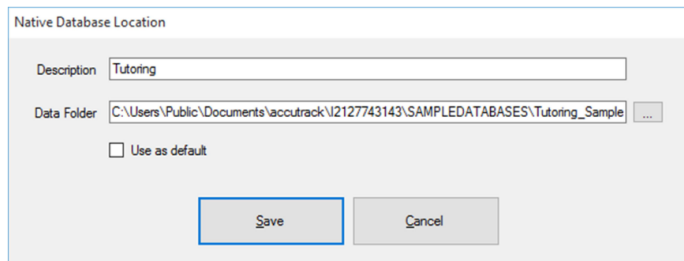
Lab Id

Lab Id

OK

AccuTrack (Native) Connection

In the main Database Connection screen, click New and select No for a Native connections then enter the appropriate information for the connection as follows:

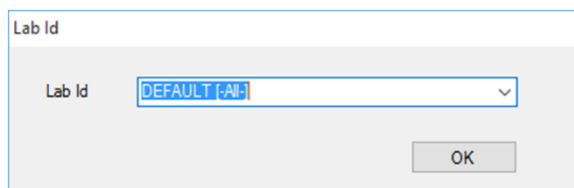


The dialog box titled "Native Database Location" contains the following fields and controls:

- Description:** A text box containing the word "Tutoring".
- Data Folder:** A text box containing the path "C:\Users\Public\Documents\accutrack\12127743143\SAMPLEDATABASES\Tutoring_Sample". To the right of the text box is a button with three dots "...".
- Use as default:** An unchecked checkbox.
- Buttons:** "Save" and "Cancel" buttons at the bottom.

- **Description:** Used to define the "Choose Lab" drop-down box presented in Web Gateway at login.
- **Data Folder:** Click the ... button to navigate to where the AccuTrack database (typically named AccuData) resides. Again, the database must be located on the same server running Web Gateway. Also, you must have read/write (and inherently modify) access to the AccuTrack database folder and all folders and files under it.
- Use as default: N/A

After you have set the connection information, click **Save** button to save your changes. You will then be presented with a Lab ID selection drop-down. Select the Local Lab you will be using for this connection. If you are not using Local labs, select DEFAULT [All] and click OK.

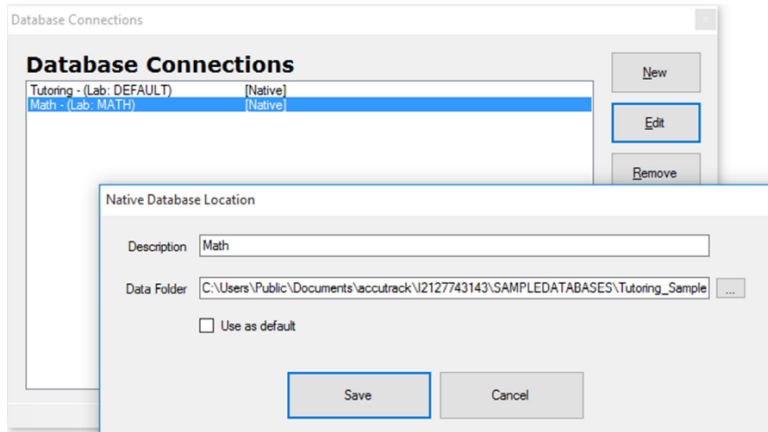


The dialog box titled "Lab Id" contains the following controls:

- Lab Id:** A drop-down menu currently showing "DEFAULT [All]".
- Button:** An "OK" button at the bottom right.

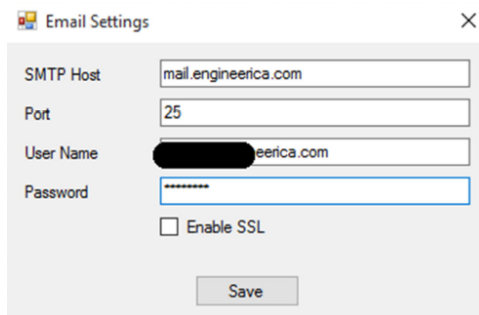
Back on the main Database Connection screen, click Save to save your changes.

You can continue to define new connections for each database and each local lab you want to define. These options will be available in a drop-down box at sign in. In following example, a second connection has been defined that is pointing to a MATH lab located in the same data path as the Default [All] lab.



Setting the Email Server Connection

In the folder where Web Gateway MVC is installed (the default is C:\WebGatewayMVC) open the ClientBin folder and then run GetEmailSettings.exe to setup the email server connection information that will be used to email appointment confirmations to students and/or tutors when appointments are scheduled (or cancelled) using Web Gateway MVC.

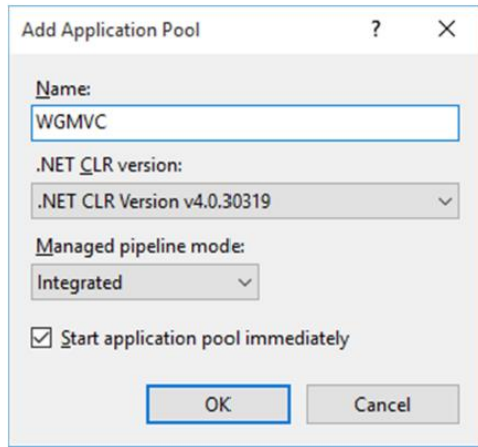


After you have entered the appropriate information, click Save to save your settings. You can then X out of the application.

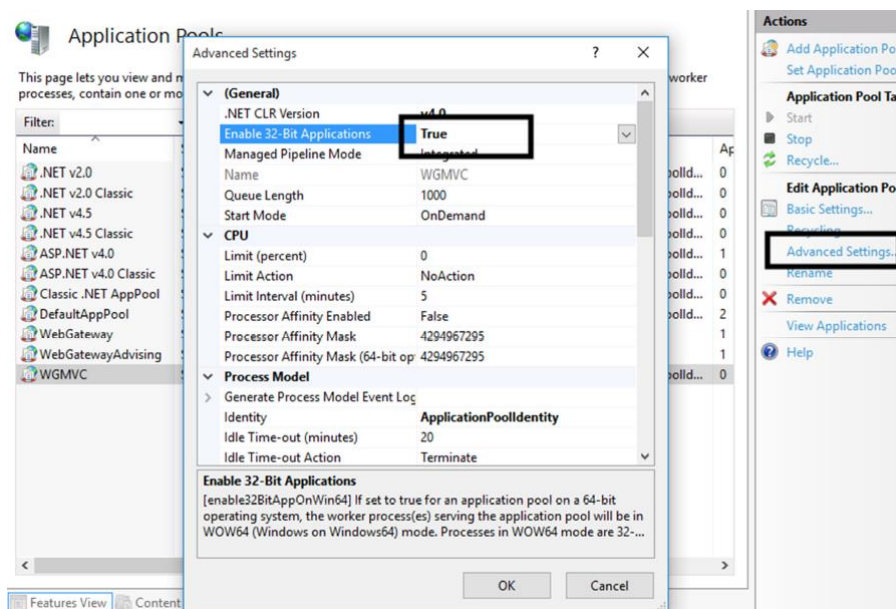
Adding the Application to IIS

Next, I will add Web Gateway MVC as a new application under my Default Web Site using Internet Information Services (IIS) Manager.

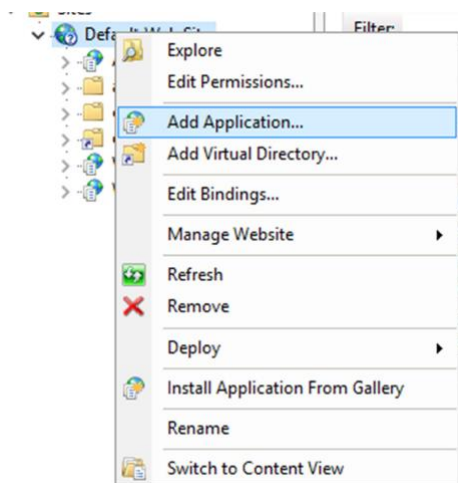
First I will add a new Application Pool and call it WGMVC and make sure I have the .NET CLR version set to Version v4.0.30319.



Next I will select that App Pool and then choose Advanced Settings and make sure I set Enable 32-bit Applications to True:



Now I will right click on my Default Web Site and choose Add Application:



Name the Alias a desired, and Select the Application pool I just created, and set the Physical path to the root folder where I installed Web Gateway MVC and then click OK

Add Application

Site name: Default Web Site
Path: /

Alias: WGMVC Application pool: WGMVC [Select...](#)

Example: sales

Physical path: C:\WebGatewayMVC [...](#)


Pass-through authentication
[Connect as...](#) [Test Settings...](#)

☐ Enable Preload

[OK](#) [Cancel](#)

My root in this example is localhost, so I will open my browser of choice to <http://localhost/WGMVC> to run Web Gateway MVC:

Engineerica Systems Inc. Home About Log in



Use Web Gateway to schedule time in the center. To get started, press Continue. If you do not have a current ID and password, please contact your center to get added as a Student

[Log In »](#)

How to make an appointment
Please login and enter your ID and password and then click Schedule Appointment. If you are not a current student, please contact your center administrator to be added.
[Learn more »](#)

How to register for a seminar
Please login and enter your ID and password and then click Seminars. If you are not a current student, please contact your center administrator to be added.
[Learn more »](#)

Need more help?
There are videos available on using Web Gateway on the Engineerica.com YouTube channel
[Learn more »](#)

© 2016 Engineerica Inc.

I can now begin using Web Gateway.